

Axxam's newest facility

is on the campus of the former Nycomed/Takeda site in Konstanz, Germany.

It is a state-of-the-art compound management facility, built to large company standards with an experienced team in place.

Compound management is co-located with the largest contract screening hub in Europe (HDC GmbH/Axxam SpA), which allows for ease of integrated projects.



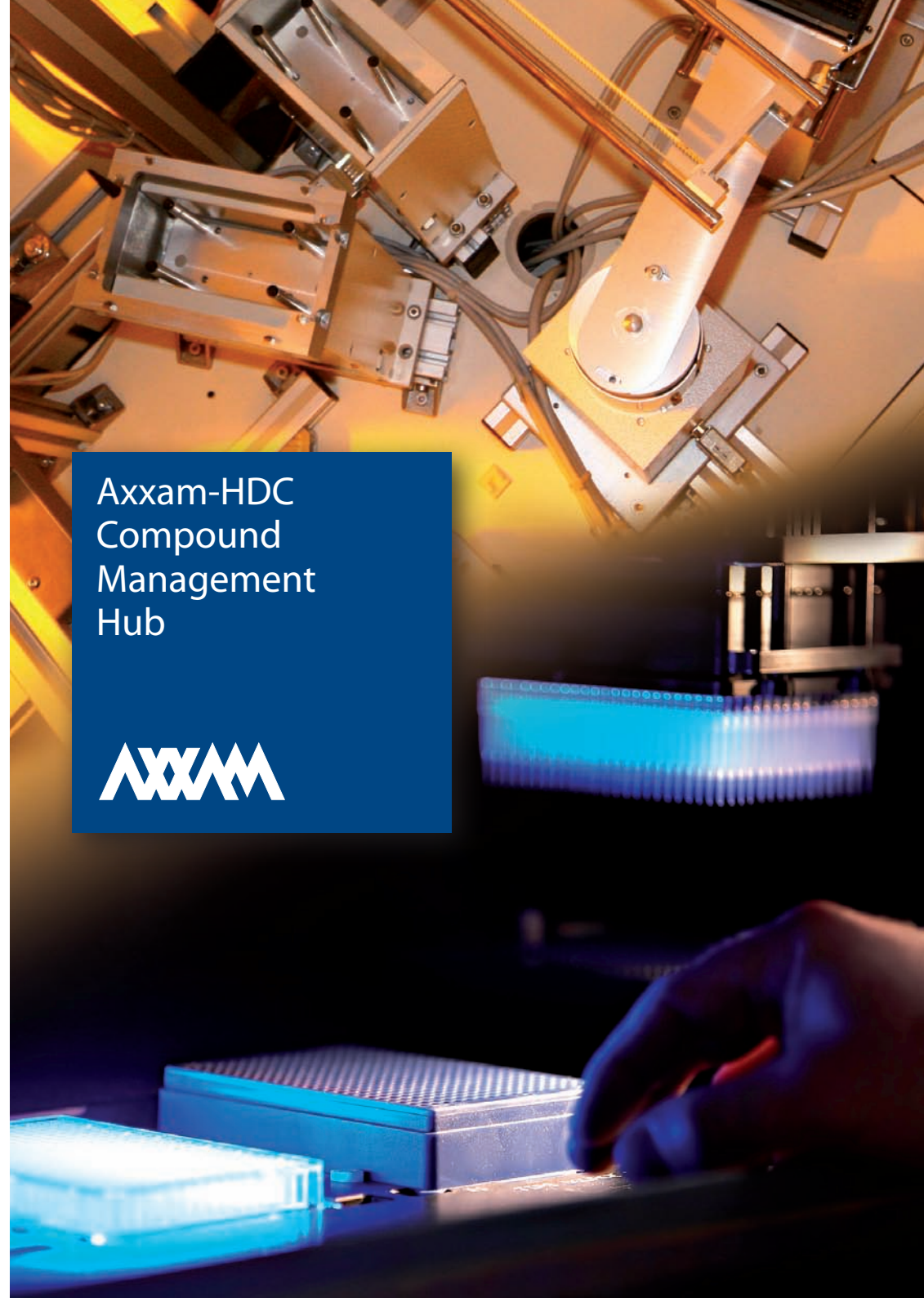
Contacts

Business Development
Sabrina Corazza
phone +39 02 2105634
sabrina.corazza.sc@axxam.com

Business Development
Todd Blewett
phone +1 203-500-3062
todd.blewett.tb@axxam.com

Corporate Offices & Laboratories
Axxam S.p.A
via Meucci 3
20091, Bresso (Milan, Italy)
phone + 39 02 210561
fax + 39 02 2105602
www.axxam.com

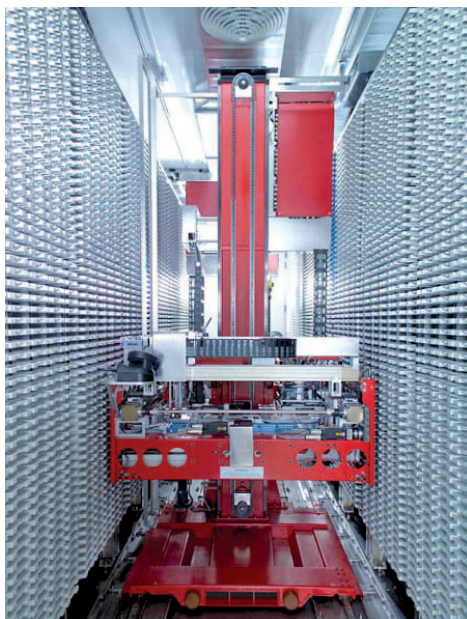
HDC GmbH
Byk-Gulden-Str. 2
D - 78467 Konstanz (Germany)
www.hit-discovery.de



Axxam-HDC Compound Management Hub



Compound Management Infrastructure



Automated storage system from REMP(Brooks Automation)

- Capacity for 128,000 plates in any SBS format
- 20°C, controlled low humidity and low oxygen, fully redundant environmental control
- Flexible plate and cherry picking capabilities including REMP labware

Brooks Automated Sample Store

- Capacity for 14,000 plates in any format
- High throughput, flexible picking capability

Large manual -20°C storage space

- Controlled low humidity, low oxygen fully redundant
- Segregated client space available

Liquid Handling

- Remp-APR (Automated Plate Replicator)
- CyBi replicator
- Customized Agilent Benchcell system
- Echo 555 acoustic pipettor

Data Handling

- Secure data exchange customizable to client needs

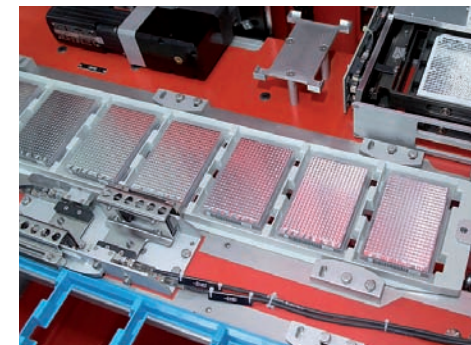
Collaboration Possibilities

Address key capacity and workflow bottlenecks in your compound management operation

Short term support during upgrade and process change periods

On-demand compound supply for screening and follow up

Integration with Axxam HTS services and access to the Axxam's highly novel collection of 240,000 compounds



Services Include

Storage and formatting of stock solutions

- Flexible storage of vials, microtubes, microplates, and REMP labware
- Single, 8, 96 and 384 channel liquid handling into 96, 384 and 1536 wells
- Transfer options for nanoliter to microliter volumes

Creation of screening ready plates and single-use tubes

Archive storage of powders and solutions in a highly secure storage facility

Offsite storage for disaster recovery protocols

Key Advantages

Experienced 'large pharma' compound management and automation team that understands client needs

Central European location of the Hub for convenient client interaction and rapid order fulfillment

Ensured sample integrity with secure, highly redundant environment control, IT infrastructure and fire protection

Client specific service level agreements to meet critical project deadlines

