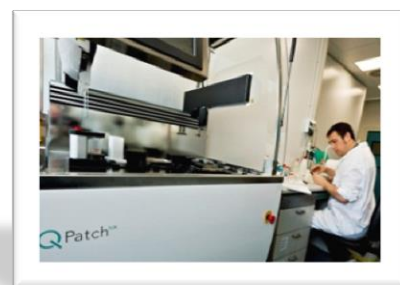


Axxam: Cell-based Assays 2014

Our Panel of Stable Cell Lines for Your Drug Discovery Programs

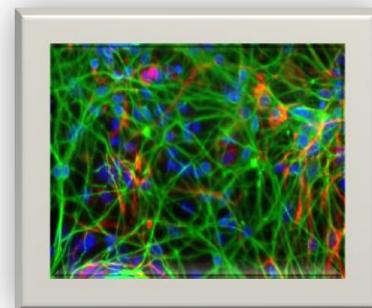
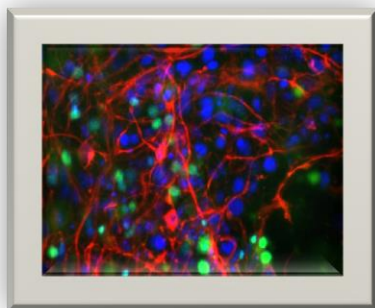
Axxam's Cell Based Assay Portfolio includes over 180 targets

- Stable transfected cell lines
- Validated for HTS applications
- Various read-outs available



- The target gene is stably expressed in the most suited recipient cell line and our experience ranges from expression of easy GPCR target up to complex multi subunit ion channels.
- Detection systems include both fluorescence and luminescence with assays optimized for standard 96 and 384 -MTP formats.

If your desired assay is not included in the list, please contact us as. We are continuously adding new assays to the list.



Contact us to receive further information

Rel. April 2014

Axxam SpA
Openzone
Via Meucci 3 – 20091, Bresso ,Milan (Italy)

Phone +39 02 21056.34
info@axxam.com
www.axxam.com

AXXAM
INNOVATES, ENABLES, PERFORMS

Target Class: GPCRs

Sub-family	Symbol	Other Aliases/Designations	GeneID
Adenosine receptors	ADORA1	Adenosine A1 receptor	134
	<i>Adora1 (mouse)</i>	mouse Adenosine A1 receptor	11539
	<i>Adora1 (rat)</i>	rat Adenosine A1 receptor	29290
	ADORA2A	Adenosine A2a receptor	135
	<i>Adora2a (mouse)</i>	mouse Adenosine A2a receptor	11540
	<i>Adora2a (rat)</i>	rat Adenosine A2a receptor	25369
	ADORA2B	Adenosine A2b receptor	136
	<i>Adora2b (mouse)</i>	mouse Adenosine A2b receptor	11541
	<i>Adora2b (rat)</i>	rat Adenosine A2b receptor	29316
	ADORA3	Adenosine A3 receptor	140
<i>Adora3 (mouse)</i>	mouse Adenosine A3 receptor	11542	
Adrenergic receptors	ADRA2A	Adrenergic, alpha-2A-, receptor	150
	ADRA2C	Adrenergic, alpha-2C receptor	152
Bile Acids receptors	GPBAR1	G protein coupled bile acid receptor 1 - TGR5	151306
Bradykinin receptors	BDKRB1	Bradykinin receptor B1	623
	<i>Bdkrb1 (rat)</i>	rat Bradykinin receptor 1	81509
	BDKRB2	Bradykinin receptor B2	624
Complement component receptors	C5aR1	Complement component 5a receptor 1	728
Cannabinoid receptors	CNR1	Cannabinoid receptor 1	1268
	CNR2	Cannabinoid receptor 2	1269
Chemokine (CXC) receptors	CCRL1	Chemokine (C-C motif) receptor-like 1	51554
	CCR2	Chemokine (C-C motif) receptor 2	1231
	CCR5	Chemokine (C-C motif) recepto 5	1234
	CCR3 New !	Chemokine (C-C motif) receptor 3	1232
	CX3CR1	Chemokine (C-X3-C motif) receptor 1	1524
	CXCR1	Interleukin 8 receptor, alpha	3577
	CXCR2	Interleukin 8 receptor, beta	3579
	CXCR3	CXC chemokine receptor 3	2833
	CMKLR1	Chemokine-Like Receptor 1 - ChemR23	1240
Colecystokinin receptor	CCKAR	Cholecystokinin A receptor	886
Dopamine receptors	DRD1	Dopamine receptor D1	1812
	DRD2	Dopamine receptor D2	1813
	DRD3	Dopamine receptor D3	1814
Formyl peptide receptor	FPRL1	FPRL1, formyl peptide receptor-like 1	2358
	FPR1 New!	Formyl peptide receptor-1	2357

Target Class: GPCRs

Sub-family	Symbol	Other Aliases/Designations	GeneID
Fatty acid receptors	GPR120	G protein-coupled receptor 120-Linolenic acid receptor	338557
	GPR119	G protein-coupled receptor 119	139760
	FFAR1	Free fatty acid receptor 1,GPR40	2864
	FFAR2	Free fatty acid receptor 2, GPR43	2867
GABA receptor	GABA-B	Gamma-aminobutyric acid (GABA) B receptor1 and 2	2550, 9568
Galanin receptor	GALR2	Galanin receptor 2	8811
Glucagon receptors	GLP1R	Glucagon-like peptide 1 receptor	2740
	GCGR	Glucagon receptor	2642
Ghrelin	GHSR	Growth Hormone secretagogue receptor	2693
Glutamate receptor	GRM1	Glutamate receptor metabotropic 1, MGLUR1A	2911
Histamine receptor	HRH3	Histamine receptor H3	11255
Kynurenic acid receptor	GPR35	G protein-coupled receptor 35	2859
Leukotriene receptors	CYSLTR1	Cysteinyl leukotriene receptor 1, LTD4	10800
	CYSLTR2	Cysteinyl leukotriene receptor 2	57105
	LTB4R	Leukotriene B4 receptor	1241
Lysophosphatidic Acid Receptors	LPAR5	Lysophosphatidic acid receptor 5, GPR93	57121
Mas Related	MRGPRX1	MAS-related GPR, member X1	259249
Muscarinic receptor	CHRM2	Cholinergic receptor, muscarinic 2	1129
Neuropeptides receptor	NPFF	Neuropeptide FF-amide peptide precursor	8620
	NPY2R	Neuropeptide Y receptor 2	4887
Nicotinic acid receptors	NIACR2	HM74, G protein-coupled receptor 109B	8843
	NIACR1	HM74A, G protein-coupled receptor 109A	338442
Opioid Receptors	OPRK1 New!	Opioid receptor, kappa 1	4986
Platelet-Activating factor	PTAFR	Platelet-activating factor receptor	5724
Prokineticin receptors	PROKR1 (GPR73)	Prokineticin receptor 1	10887
	PROKR2 (GPR73L1)	Prokineticin receptor 2	128674
Prostanoid receptors	PTGDR2	GPR44, CRTH2, DP2, Prostaglandin D2 receptor	11251
	PTGIR	Prostaglandin I2, prostacyclin receptor, IP	5739
	PTGER1	Prostaglandin E receptor 1 (subtype EP1), 42kDa, EP1	5731
	rEP1 (rat)	rat Prostaglandin E receptor 1 (subtype EP1)	25637
	PTGER2	Prostaglandin E receptor 2 (subtype EP2), 53kDa, EP2	5732
	PTGER3	Prostaglandin E receptor 3 (subtype EP3), EP3	5733
	rEP3 (rat)	rat Prostaglandin E receptor 3 (subtype EP3)	24929
	PTGER4	Prostaglandin E receptor 4 (subtype EP4), EP4	5734

Please be aware that provision of the above listed assays may require third party licenses. All products are for research use only.

Target Class: GPCRs

Sub-family	Symbol	Other Aliases/Designations	GeneID
Protease activated receptors	F2RL1	PAR2, Coagulation factor II (thrombin) receptor-like 1	2150
	F2RL3	PAR4, Coagulation factor II (thrombin) receptor-like 3	9002
Purinergic receptors	P2RY1 (<i>transient</i>)	Purinergic receptor P2Y, G-protein coupled, 1	5028
	P2RY2 (<i>transient</i>)	Purinergic receptor P2Y, G-protein coupled, 2	5029
	P2RY6 (<i>transient</i>)	Purinergic receptor P2Y, G-protein coupled, 6	5031
	P2RY11 (<i>transient</i>)	Purinergic receptor P2Y, G-protein coupled, 11	5032
	P2RY12 (<i>transient</i>)	Purinergic receptor P2Y, G-protein coupled, 12	64805
	P2RY13 (<i>transient</i>)	Purinergic receptor P2Y, G-protein coupled, 13	53829
Serotonin receptor	HTR2A	Serotonin 5-HT-2A receptor	3356
Succinate receptor	SUCNR1	GPR91, Succinate receptor 1	56670
Sphingosine-1 phosphate	S1pr3 (<i>mouse</i>)	<i>mus musculus</i> Sphingosine-1-phosphate receptor 3	13610
Urotensin receptors	UTS2R	Urotensin 2 receptor, GPR14,	2837
Vasopressin receptors	AVPR1A	V1aR, Arginine vasopressin receptor 1A	552
	AVPR2	V2R, Arginine vasopressin receptor 2	554

Target Class: Ion Channels

Ligand gated

Sub-family	Symbol	Other Aliases/Designations	GeneID
Ligand gated K ⁺ channels	SUR1/Kir 6.2 ABCC8 KCNJ11	ATP-binding cassette, sub-family C (CFTR/MRP), member 8 potassium inwardly-rectifying channel, subfamily J, member 11	6833 - 3767
	SUR2A/Kir 6.2 ABCC9 KCNJ11	ATP-binding cassette, sub-family C (CFTR/MRP), member 9 potassium inwardly-rectifying channel, subfamily J, member 11	10060 - 3767
Ligand gated Ca ²⁺ channels	P2RX1	Purinergic receptor P2X, ligand-gated ion channel, 1	5023
	P2RX2 (<i>transient</i>)	Purinergic receptor P2X, ligand-gated ion channel, 2	22953
	P2RX2/P2RX3	Heteromeric P2X2/P2X3 receptor	22953 - 5024
	P2RX3	Purinergic receptor P2X, ligand-gated ion channel, 3	5024
	P2RX4	Purinergic receptor P2X, ligand-gated ion channel, 4	5025
	P2rx4 (<i>mouse</i>)	mouse Purinergic receptor P2x ligand-gated ion channel, 4	18438
	P2rx4 (<i>rat – transient</i>) New !	rat Purinergic receptor P2x ligand-gated ion channel, 4	29659
	P2RX7	Purinergic receptor P2X, ligand-gated ion channel, 7	5027
	P2rx7	rat Purinergic receptor P2X, ligand-gated ion channel, 7	29665
	P2rx7 (<i>mouse</i>) New!	Mouse Purinergic receptor P2X, ligand-gated ion channel, 7	18439
Ionotropic Glutamate channel	Grin1/Grin2b (<i>rat</i>)	rat glutamate receptor, ionotropic, N-methyl D-aspartate 1/2b	24408 - 24410
Chloride channels	GABRA1-GABRB1-GABRG2	Gamma-aminobutyric acid (GABA) A receptor, alpha 1, beta 1, gamma 2	2554-2560-2566
	GLRA1	Glycine receptor, alpha 1	2741

Please be aware that provision of the above listed assays may require third party licenses. All products are for research use only.

Target Class: Ion Channels

Ligand gated

Sub-family	Symbol	Other Aliases/Designations	Gene ID
Transient receptor potential channels	TRPA1	ANKTM1, Transient receptor potential cation channel subfamily A member 1	8989
	<i>Trpa1</i> (rat- transient) New!	<i>Transient receptor potential cation channel, subfamily A, member 1 (rat)</i>	312896
	TRPC3	Transient receptor potential cation channel, subfamily C, member 3	7222
	TRPC5	Transient receptor potential cation channel, subfamily C, member 5	7224
	TRPC6	Transient receptor potential cation channel, subfamily C, member 6	7225
	TRPC7	Transient receptor potential cation channel, subfamily C, member 7	57113
	TRPM2	Transient receptor potential cation channel, subfamily M, member 2	7226
	TRPM5	Transient receptor potential cation channel, subfamily M, member 5	29850
	TRPM8	Transient receptor potential cation channel, subfamily M, member 8	79054
	TRPV1	Transient receptor potential cation channel, subfamily V, member 1	7442
	<i>Trpv1</i> (guinea pig – transient) New!	<i>Trpv1 transient receptor potential cation channel, subfamily V, member 1 (guinea pig)</i>	100135466
	TRPV2 Coming soon	Transient receptor potential cation channel, subfamily V, member 2	51393
	TRPV4	Transient receptor potential cation channel, subfamily V, member 4	59341
	<i>Trpv4</i> (guinea pig – transient) New!	<i>Trpv1 transient receptor potential cation channel, subfamily V, member 4 (guinea pig)</i>	100724607

Target Class: Ion Channels

Voltage gated

Sub-family	Symbol	Other Aliases/Designations	GeneID
Voltage gated Na ⁺ channels	SCN9A (Nav1.7)	Sodium channel, voltage-gated, type IX, alpha subunit	6335
	SCN5A (Nav1.5)	Sodium channel, voltage-gated, type V, alpha subunit	6331
Voltage gated K ⁺ channels	KCNH5 (EAG2)	Ether a go-go-related potassium channel 2l	27133
	KCNH2 (hERG) (Qpatch)	Potassium voltage-gated channel, subfamily H (eag-related), member 2	3757
	KCNQ1/KCNE1(Kv7.1/minK)	potassium voltage-gated channel, KQT-like subfamily, member 1 / potassium voltage-gated channel, IsK-related subfamily, member 1	3784/3753
	KCNA3 (Kv1.3)	Potassium voltage-gated channel, shaker-related subfamily, member 3	3738
	KCNA5 (Kv1.5)	Potassium voltage-gated channel, shaker-related subfamily, member 5	3741
	KCNB1 (Kv2.1)	Potassium voltage-gated channel, Shab-related subfamily, member 1	3745
Inwardly Rectifying K ⁺ channels	KCNJ4 (Kir 2.3)	Potassium inwardly-rectifying channel, subfamilyJ, member 4	3761
Voltage gated Ca ²⁺ channels	CACNA1C (Cav 1.2)	Calcium channel, voltage-dependent, L type, alpha 1C subunit	775
	CACNA1D (Cav1.3)	Calcium channel, voltage-dependent, L type, alpha 1D subunit	776
	CACNA1B (Cav 2.2)** (endogenous)	Calcium channel, voltage-dependent, N type, alpha 1B subunit	774
	CACNA1G (Cav 3.1)	Calcium channel, voltage-dependent, T type, alpha 1G subunit	8913
	CACNA1I (Cav 3.3)	Calcium channel, voltage-dependent, T type, alpha 1I subunit	8911

** endogenous receptors

Sub-family	Symbol	Other Aliases/Designations	GeneID
Store-operated Ca ²⁺ channels	CRAC	ORAI1(calcium release-activated calcium modulator 1) + STIM-1 (stromal interaction molecule 1)	84876 - 6786
Calcium Activated Chloride Channels	CLCA1	calcium-activated chloride channel protein 1	1179
	TMEM16A	Trans-membrane protein 16A (Cl channel)	55107
Na ⁺ channels	SCNN1A (ENAC α)	Sodium channel, nonvoltage-gated 1 alpha .beta.gamma	6337 -6338-6340
	SCNN1A (ENAC α)** (endogenous)	Sodium channel, nonvoltage-gated 1 alpha .beta.gamma	6337 -6338-6340
	SCNN1D (ENAC δ)	Sodium channel, nonvoltage-gated 1 delta,beta,gamma	6339 -6338 -6340
Ca ²⁺ activated K ⁺ channels	KCNN3 (SK3)	Potassium intermediate/small conductance calcium-activated channel, subfamily N, member 3	3782

Target Class: Transporters

Sub-family	Symbol	Other Aliases/Designations	GeneID
Neurotransmitter transporters	SLC6A12	BGT-1, gamma-aminobutyric acid transporter	6539
	SLC6A3	DAT, Dopamine transporter	6531
	SLC6A1	GAT1, GABA transporter 1	6529
	SLC6A11	GAT3, GABA transporter 3	6538
	SLC6A9	GLYT1, Glycin transporter 1	6536
	SLC6A5	GLYT2, Glycin transporter 2	9152
	SLC6A15	Proline transporter, Solute carrier family 6, member 15	55117
	SLC6A2	NET, Norepinephrine transporter	6530
Anionic transporters	SLC01B3	OATP8, Solute carrier organic anion transporter family, member 1B3	28234
Glucose Transporters	Slc2a1 (GLUT1-rat)	Slc2a1 solute carrier family 2 (facilitated glucose transporter), member 1	24778
	Slc2a2 (GLUT2-rat)	Slc2a2 solute carrier family 2 (facilitated glucose transporter), member 2	25351
	Slc2a3 (GLUT3-rat)	Slc2a3 solute carrier family 2 (facilitated glucose transporter), member 3	25551
	SLC2A1 (GLUT1-canine)	SLC2A1 solute carrier family 2 (facilitated glucose transporter), member 1	482437
	SLC2A2 (GLUT2-canine)	SLC2A2 solute carrier family 2 (facilitated glucose transporter), member 2	488165
	SLC2A3 (GLUT3-canine)	SLC2A2 solute carrier family 2 (facilitated glucose transporter), member 3	403997

Target Class: Exchangers

Sub-family	Symbol	Other Aliases/Designations	GeneID
Na ⁺ /K ⁺ /Ca ²⁺ exchangers	SLC24A3 (NCKX3)	Solute carrier family 24 (sodium/potassium/calcium exchanger), member 3	57419
Na ⁺ /Ca ²⁺ exchangers	SLC8A1 (NCX1)	Solute carrier family 8 (sodium/calcium exchanger), member 1	6546
	SLC8A2 (NCX2)	Solute carrier family 8 (sodium/calcium exchanger), member 2	6543

Target Class: Toll-Like Receptors

Sub-family	Symbol	Other Aliases/Designations	GeneID
Toll-like Receptor 4	TLR4 (endogenous)	TOLL; CD284; hToll; ARMD10	7099
	Tlr4 (mouse-endogenous)	<i>mouse toll-like receptor 4</i>	21898
Toll-Like Receptor 9	TLR9	CD289	54106

Target Class: Enzymes

Sub-family	Symbol	Other Aliases/Designations	GeneID
Adenylate Cyclase	ADCY5	AC5, adenylyl cyclase 5, adenylate cyclase type V, ATP pyrophosphate-lyase 5	111
	ADCY6	AC6, adenylyl cyclase 6, ATP pyrophosphate-lyase 6, adenylate cyclase type VI	112
Nitric Oxide Synthase	NOS2	iNOS, Inducible Nitric Oxide Synthase (Type II), NOS Type II	4843
	NOS3	Nitric oxide synthase 3 (endothelial cell), cNOS, EC-NOS, endothelial NOS	4846
	NOS3 mRNA post-transcriptional regulation	Nitric oxide synthase 3 (endothelial cell), cNOS, EC-NOS, endothelial NOS	4846

Target Class: Others

Sub-family	Symbol	Other Aliases/Designations	GeneID
Tyrosine Kinase receptors	NGF receptor (<i>endogenous - rat</i>)	<i>Ntrk1 neurotrophic tyrosine kinase, receptor, type 1 (Rattus norvegicus)</i>	59109
Cytokine receptors	TNFRSF1A (endogenous)	TNFR, TNF-alpha receptor	7132
Platelet Glycoprotein receptors	GP6	GPVI, glycoprotein VI (platelet)	51206

Target Class: Nuclear Hormone Receptors

Class	Symbol	Other Aliases/Designations	GeneID
Nuclear Hormone Receptors	ESR1	ER-alpha, Estrogen receptor 1	2099
	ESR2	ER-beta, Estrogen receptor 2	2100
	NR1H4	FXR, Nuclear receptor subfamily 1, group H, member 4	9971
	NR3C1	GR, Glucocorticoid receptor, nuclear receptor subfamily 3, group C, member 1	2908
	NR1H3	LXR-alpha, Nuclear receptor subfamily 1, group H, member 3	10062
	NR1H2	LXR-beta, Nuclear receptor subfamily 1, group H, member 2	7376
	NR3C2	MR, mineralcorticoid receptor, Nuclear receptor subfamily 3, group C, member 2	4306
	PPARA	PPAR-alpha, Peroxisome proliferator-activated receptor alpha	5465
	PPARD	PPAR-delta, Peroxisome proliferator-activated receptor delta	5467
	PPARG	PPAR-gamma, Peroxisome proliferator-activated receptor gamma	5468
	PGR	Progesteron receptor	5241
	NR1I2	PXR, Pregnane X receptor	8856
	RARA	Retinoic acid receptor, alpha	5914
	RARB	Retinoic acid receptor, beta	5915
	RARG	Retinoic acid receptor, gamma	5916
	RORA	RAR-related orphan receptor A	6095
	RXRA	Retinoid X receptor, alpha	6256
	NR5A1	SF-1, Nuclear receptor subfamily 5, group A, member 1	2516
	THRA	Thyroid hormone receptor alpha	7067
	THRB	Thyroid hormon receptor beta	7068
VDR	Vitamin D (1,25- dihydroxyvitamin D3) receptor	7421	

Please be aware that provision of the above listed assays may require third party licenses. All products are for research use only.